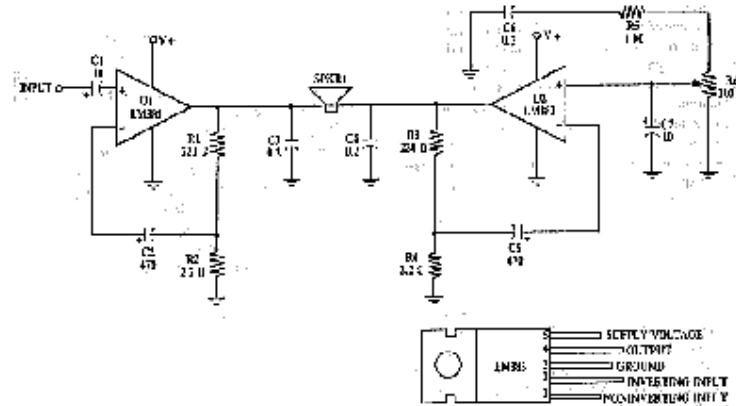


16 watt amp:



[click here to enlarge schematic](#)

parts:

| | |
|------------|--|
| U1 U2 | LM3838 8 watt audio amplifier ic |
| R1, R3 | 220 ohm resistor |
| R2, R4 | 2.2 ohm resistor |
| R5 | 1 megohm resistor |
| R6 | 100k audio taper potentiometer |
| C1, C7 | 10uf electrolytic capacitor |
| C2, C5 | 470uf electrolytic capacitor |
| C3, C4, C6 | 0.2uf ceramic capacitor |
| SPKR1 | 4 to 8 ohm speaker (up to 8 inches diameter) |